

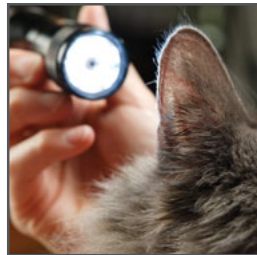
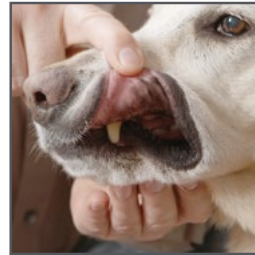
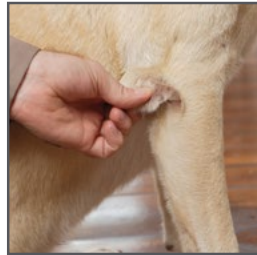
How to perform a blood glucose test with the AlphaTRAK[®] 2 Meter.

Testing your diabetic pet's blood glucose at home is easy and accurate with AlphaTRAK 2. Using the lancing device is virtually painless for your pet. With a little practice, performing a blood glucose test will fit easily into your daily routine.

ALPHATRAK 2 IS DESIGNED WITH YOU AND YOUR PET IN MIND.

- Requires a very small blood sample size
- Turns on and starts test automatically
- Strips are designed for faster wicking
- Readings are ready in seconds

FOLLOW THE STEPS BELOW TO COMPLETE A TEST. HELPFUL TESTING TIPS ARE ON THE BACK OF THIS SHEET.



Step 1: Select a testing site

Testing sites on dogs:

- Elbow callus
- Marginal ear vein
- Side of the paw pad
- Inside of upper lip

Testing sites on cats:

- Marginal ear vein
- Side of the paw pad

Step 2: Gather all the supplies needed to perform a test

- AlphaTRAK[®] 2 Meter
- Lancet
- AlphaTRAK 2 Testing Strips
- Vaseline (to help blood form droplets)
- Gauze or tissue



Step 3: Prepare lancet

Insert a new lancet into a lancing device, push until it comes to a complete stop, and replace the clear cover.

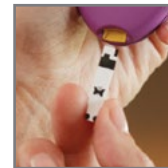


Adjust lancing device depth by rotating the wheel: 1 is the shallowest, 4 is the deepest.



Step 4: Insert test strip into meter

Turn the meter on by inserting a test strip with the butterfly on the test strip facing up and flying into the meter. Confirm that the code on the meter matches the species code on the test strip vial.



Step 5: Draw blood

Using the lancing device, draw a small amount of blood from the selected testing site. (See reverse side for tips for this step.)



Step 6: Obtain blood sample with meter

With the meter, touch **only one side of the test strip** to the blood drop. You will hear a beep and see the lines moving on the meter display to indicate it is working.



Step 7: Record results

Results appear in seconds. Record the glucose reading and discard used test strip and lancet.



HELPFUL TIPS FOR A SUCCESSFUL BLOOD GLUCOSE TEST

USE THE SAME SITE EACH TIME YOU TEST

This helps to ensure consistent results. If the testing site gets irritated or if you are having a hard time collecting a sample, use an alternate site. It is good to find at least two sample sites that work best on your pet.

PREPARE THE LOCATION

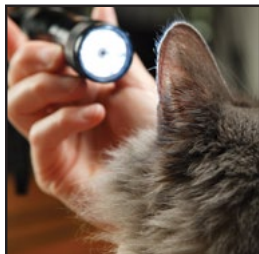
Before starting a test, pick a well-lit place where both you and your pet are comfortable. You may wish to gather petroleum jelly to help the blood drop form and some tissue or gauze for lancing and cleanup.

FAMILIARIZE YOUR PET WITH THE SOUND OF THE LANCING DEVICE

To help avoid startling your pet, it may help to hold the device close to its ear and press the button a few times before performing the test the first time.

PREPARE THE TESTING SITE

- If you choose the marginal ear vein as the testing site, it may help to use a flashlight to see the vein better and to place gauze or a cotton ball behind the ear to make a firmer testing surface.
- If you choose the paw pad as the testing site, select an area on the side of the paw that your pet does not step on.
- To increase blood flow to the testing site, it may help to warm the area. Prior to lancing, gently rub the area or hold a warm cloth against the area for a few seconds. You can also make a warming pad by putting dry rice in a bag or sock and warming in the microwave for 20-30 seconds. Hold the warming pad against the testing site for a few seconds.
- To help the blood form into a droplet, apply a very thin layer of petroleum jelly to sample site before lancing.



IF NEEDED, YOU MAY ADD MORE BLOOD

Only touch one side of the test strip to the blood drop for each test. If the blood drop was too small, you may add more blood to the same test strip for up to 60 seconds. Make sure you add blood to the same side of the test strip.

- If you are having trouble getting a blood sample, apply gentle pressure to the test site with the lancing device. If you still have not received enough blood after 60 seconds, change the lancet and adjust the lancing device penetration.
- Once the test is complete, apply gentle pressure to the test site with gauze or a cotton ball to stop the bleeding, if needed.

REWARD

You may want to give your pet a diabetes-friendly reward after you are done with the test.

